

LAMINAR AIR FLOW BENCH

48⁺ Years
Of experience



In Association with SVCH-Technologii, Moscow (Russia)

ISO 9001:2015 | ISO 14001:2015 | ISO 45001:2018

ABOUT US

KERONE is now renowned for serving the specialized needs of customers with the best quality and economical process of application engineering solutions and industrial heating products manufactured in a high-quality environment by a trained and qualified workforce (special purpose machinery)



KERONE is a pioneer in application and implementation engineering with its vast experience and team of professionals.



KERONE is devoted to serve the industry to optimize its operations both economically and environmentally with its specialized process engineering solutions.



KERONE is having immense expertise in manufacturing and implementing various types of engineering solutions.



KERONE is possessing employee strength of more than 280+ experts continuously putting efforts for happy industrial engineering solutions



48+ Years Manufacturing Excellence



Great Sale Support



Highly Customized Product



Adherence to Standards



Sound Infrastructure



Team of experts Delivering Quality



Timely Delivery



Cost Effective Solutions



WHY CHOOSE US

"Choose Kerone for innovative solutions tailored to your unique product needs, ensuring efficiency, reliability, and unmatched quality."

With decades of expertise, cutting-edge technology, and a customer-centric approach, Kerone Engineering offers tailor-made Applications Engineering solutions that prioritize quality, flexibility, and cost-effectiveness. Benefit from our commitment to excellence, post-sales support, and innovative solutions for your unique Applications Engineering needs. Choose Kerone Engineering for reliability, performance, and unmatched value.

MISSION



To enhance the value of customer operation through our customer need centric engineering solution.



We are committed to providing our customers with unique and best-in-class products in the industrial thermal processing segments. Through strategic tie-ups for technical know-how with renowned leaders in industry-specific segments, we ensure that our offerings meet the highest standards of quality and innovation.

VISION



Turn into a world leader in providing specialized, top-notch quality and ecological industrial heating, cooling, and drying solutions across the globe.



To attain global recognition as the best of quality and environment-friendly engineering solution company.

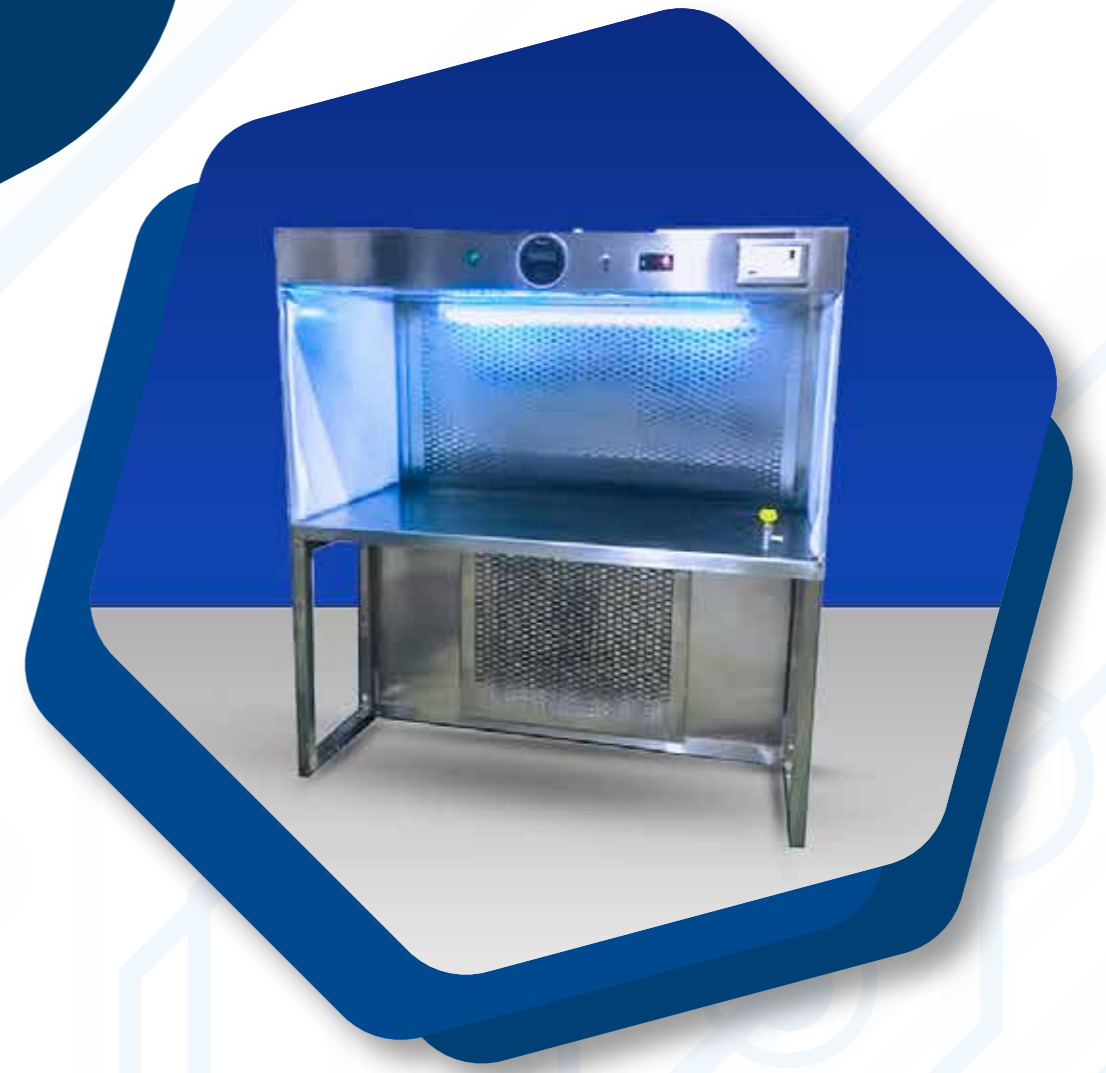


Enhance the value of customer operation through our customer need centric engineering solution.



TRUSTED PARTNERS





Laminar Air Flow Bench

KERONE's Laminar Air Flow bench is meticulously engineered to provide a clean-air environment crucial for testing and inspection processes. Constructed with industrial-grade materials such as mild steel or wood covered with mica sheets, and featuring a heavy gauge stainless steel working board, the bench ensures durability and reliability. Its side panels, crafted from heavy Plexiglas sheets mounted on anodized aluminum frames, offer transparency while maintaining structural integrity. Equipped with washable synthetic pre-filter units and secondary high-efficiency perfect air filters, boasting efficiency ratings exceeding 99.69% at DOP (cold) and 99.97% at DOP (hot), the bench effectively captures particles larger than 0.3 microns, guaranteeing a pristine working environment.

Moreover, KERONE's Laminar Air Flow bench prioritizes user comfort and safety, featuring a differential manometer to monitor pressure drops during operation, along with gas cocks and power sockets for convenience. The inclusion of a fluorescent light board providing illumination of over 800 ideal wattage ensures optimal visibility while also aiding in unit sanitation. Additionally, ultraviolet lights fitted within the illumination board further disinfect the air within the enclosure, maintaining cleanliness standards. Engineered to minimize vibration levels and control noise below 55 dB, KERONE's Laminar Air Flow bench offers a superior solution for environments requiring stringent cleanliness standards, ensuring reliable and efficient testing and inspection processes.

Features

- Electrical Outlets and Accessories
- Unidirectional Airflow
- HEPA or ULPA Filters
- Mobile or Fixed Configuration
- UV-C Germicidal Lamps
- Transparent Side Panels
- Adjustable Height and Ergonomic Design

Advantages

- Protection of Sensitive Samples
- Worker Safety, Cost-Efficiency
- Optimized Working Conditions
- Contamination Control
- Versatility and Adaptability
- Emergency Preparedness
- Compliance with Regulatory Standards

Application

- Cleanrooms and Semiconductor Industry
- Microbiological Laboratories
- Tissue Culture and Cell Culture
- Pharmaceutical Manufacturing
- Medical Device Assembly
- Electronics Assembly and Testing
- Hospital Pharmacies and Compounding Facilities

OUR CLIENTS









THANK YOU

UNIT 1

4 & 5, Marudhar Industrial Estate, Gas Godown Lane, Goddev Fatak Road, Bhayander (E), Dist. Thane - 401105. (India)

Contact Us
+91-22 48255071,
48255072

UNIT 2

Plot No. B-47, Addl. Midc Anandnagar, Ambernath (E), Dist. Thane (India)- 421506

Contact Us
+91(0251)26205
42/43/44/45/46

KRDC

Plot No K2, Industrial Gala F4A, D- Wing, MGN Properties, Opposite Godrej Co., Addl MIDC Anand Nagar, Ambernath (E)- 421506 (India)

Contact Us
+91-2512620543/44

UNIT 4 (EUROPE)

Kerone Engineering Solutions LTD. (EMitech) Viale della Palma, 7, 70033 Corato BA, Italy (Europe)

UNIT 5 (THAILAND)

Thailand Representative:
163 Rajapark Building,
18th floor, Sukhumvit 21
Road (Asoke), Wattana,
Bangkok - 10110, Thailand

Contact Person
G.Vivekanand
+6689 500 9821

Uzbekistan / Kazakhstan (Office)

TIT Company LLC: 100060,
2, A. Kahhar, Tashkent,
Uzbekistan

Contact Person
Mr. Slava
+998 903540963

Israel (Office)

Ornatus Industrial Tech
Ltd: Dam Hamac bim 36,
7178602 Modiin, Israel

Contact Person
Omri Fabian
+972 584844887

Australia & New Zealand (Office)

Linetech Pty Ltd:
Po Box 3046, Browns
Plains, Qld 4118. Australia

Contact Person
Eric Quevauvilliers
+61 (0)418 871 005

Bangladesh (Office)

House-10, Road-5 Priyanka
City, Sector-12, Uttara,
Dhaka-1230, Bangladesh

Contact Person
Md. Emtiaz Morshed
+8801747762200



SCAN HERE

Our Mails

info@kerone.com
sales@kerone.com
marketing@kerone.com

Website

www.kerone.com
www.kerone.net
www.keroneindia.com