



**48<sup>+</sup> Years**  
*Of experience*

# INFRARED ONLINE MOISTURE ANALYZER



In Association with SVCH-Technologii, Moscow (Russia)  
ISO 9001:2015 | ISO 14001:2015 | ISO 45001:2018

# ABOUT US

KERONE is now renowned for serving the specialized needs of customers with the best quality and economical process of application engineering solutions and industrial heating products manufactured in a high-quality environment by a trained and qualified workforce (special purpose machinery)



KERONE is a pioneer in application and implementation engineering with its vast experience and team of professionals.



KERONE is devoted to serve the industry to optimize its operations both economically and environmentally with its specialized process engineering solutions.



KERONE is having immense expertise in manufacturing and implementing various types of engineering solutions.



KERONE is possessing employee strength of more than 280+ experts continuously putting efforts for happy industrial engineering solutions



48+ Years Manufacturing Excellence



Great Sale Support



Highly Customized Product



Adherence to Standards



Sound Infrastructure



Team of experts Delivering Quality



Timely Delivery



Cost Effective Solutions



# WHY CHOOSE US

"Choose Kerone for innovative solutions tailored to your unique product needs, ensuring efficiency, reliability, and unmatched quality."

With decades of expertise, cutting-edge technology, and a customer-centric approach, Kerone Engineering offers tailor-made Applications Engineering solutions that prioritize quality, flexibility, and cost-effectiveness. Benefit from our commitment to excellence, post-sales support, and innovative solutions for your unique Applications Engineering needs. Choose Kerone Engineering for reliability, performance, and unmatched value.

## MISSION



To enhance the value of customer operation through our customer need centric engineering solution.



We are committed to providing our customers with unique and best-in-class products in the industrial thermal processing segments. Through strategic tie-ups for technical know-how with renowned leaders in industry-specific segments, we ensure that our offerings meet the highest standards of quality and innovation.

## VISION



Turn into a world leader in providing specialized, top-notch quality and ecological industrial heating, cooling, and drying solutions across the globe.



To attain global recognition as the best of quality and environment-friendly engineering solution company.



Enhance the value of customer operation through our customer need centric engineering solution.



# TRUSTED PARTNERS





## Infrared Online Moisture Analyzer

Infrared online moisture analyzer, non-contact, continuous, real-time, on-line measuring moisture. The distance is 20cm-40cm, high accuracy, wide range, and provides 4-20mA current signal, automated control,

**Suitable for:** food, metallurgy, tobacco, wood, paper processing, building materials, chemicals, mining, pharmaceutical, energy field.

### Principle

It is the use of water molecules on the infrared spectral absorption characteristics, to measure the moisture content of the measured object.

IR bands (0.78 ~ 2.5 $\mu$ m wavelength range of electromagnetic waves) absorption of water molecules is not the average, a strong wavelength at a low wavelength in the other. Use of this feature, infrared moisture analyzer emit different wavelengths of infrared light (5-beam, 6-beam, 8-beam, 10 beams), and receives the reflected signal measured material, to calculate the moisture content of the measured object.



### Features

#### ● Fast measurements:

With long-life high-speed brushless motor, imported high response infrared sensors, information processing chip FPGA + DSP + ARM9 combination, to ensure the real-time data acquisition, improve measurement precision and stability.

## ● Reliability:

With dual optical detectors, the optical system for monitoring and compensation, moisture measurement from the sensor to ensure effects of aging.

## ● Non-contact and fast response:

Online fast continuous measurement and non-contact measurement, the measured object can fluctuate between 20-40cm, online dynamic real-time detection, to achieve a real-time control of product moisture content.

## ● Stable performance, high precision:

5-beam infrared moisture analyzer, its stability compared four beam and six beam greatly improved, in order to ensure the measurement more accurate and more stable.

## ● Easy to install, easy to operate:

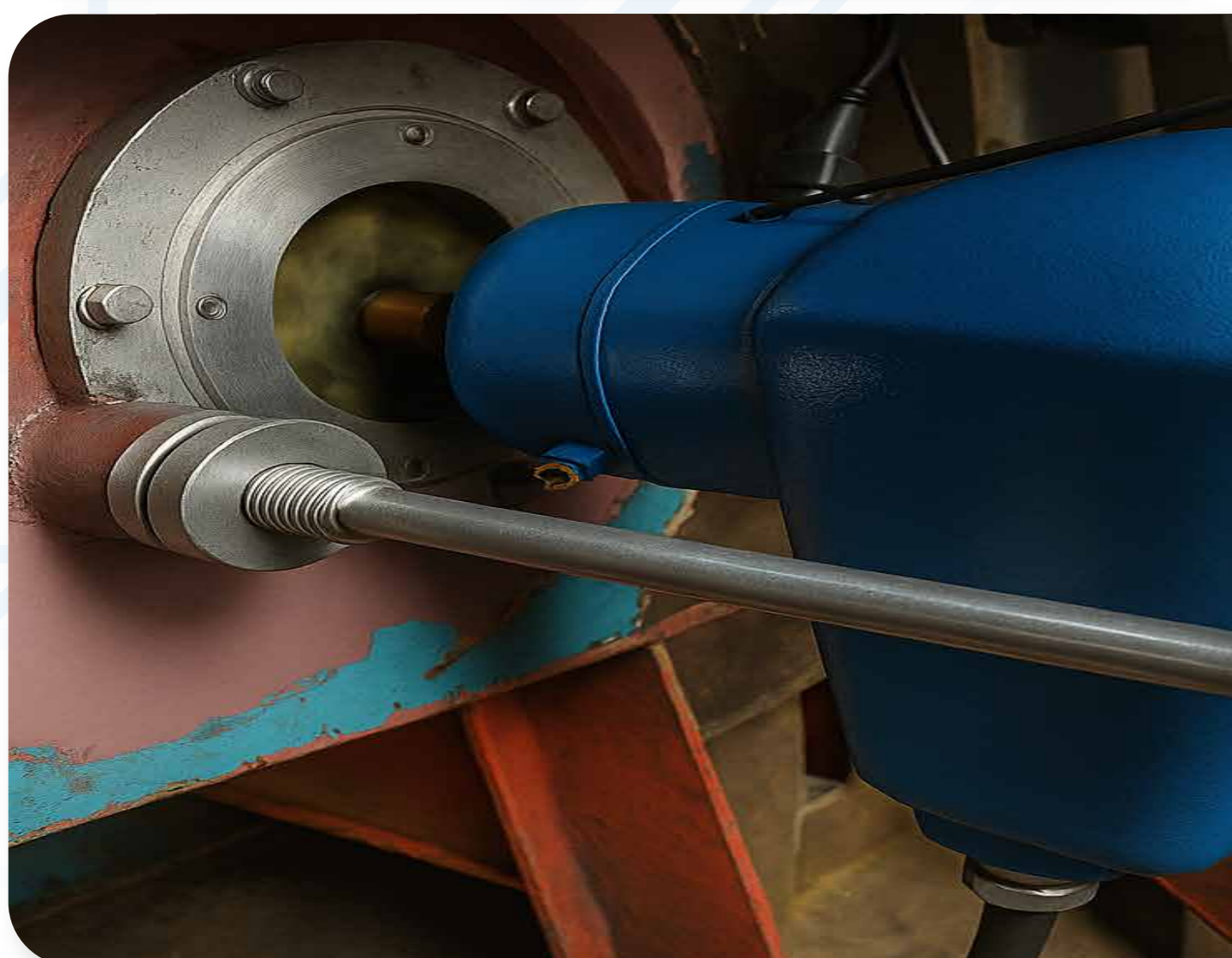
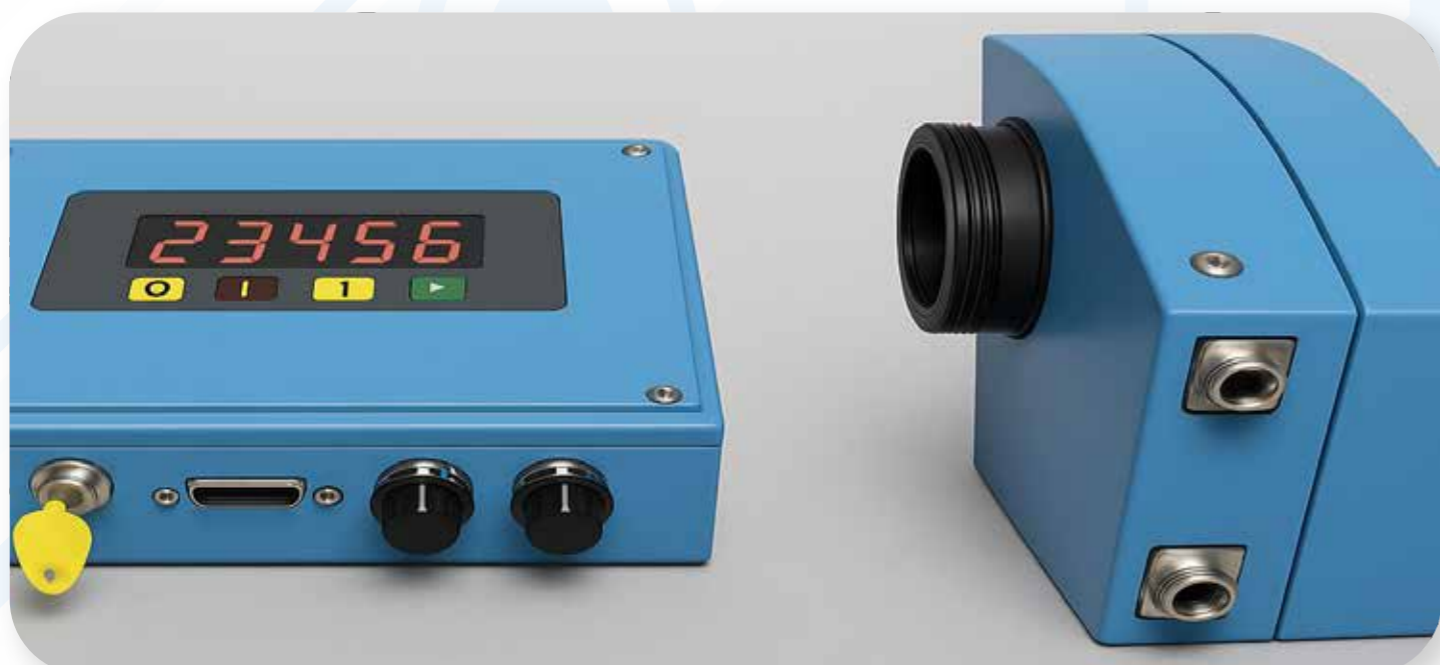
Instrument easy installation, using a predetermined calibration, only need fix the intercept (zero) to complete the demarcation. Using single-chip digital operation, easy to operate.

## Main Technical parameters

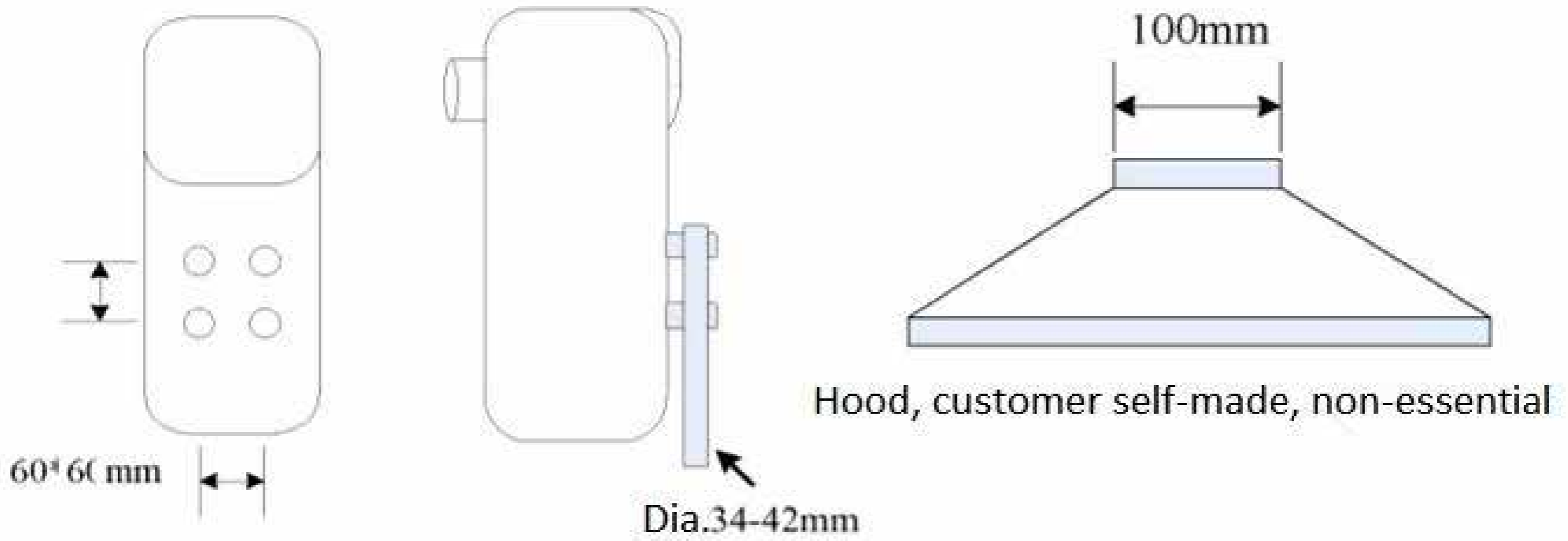
Measuring range	0-99% (can OEM)
Measurement resolution	0.01%
Measuring accuracy	0.1%FS-0.5%FS
Repeatability	0.1%
Static accuracy	0.1%
Light Diameter	40mm
Light beam	5
Infrared wavelength	1940nm
Infrared bandwidth	±50nm
Filtering range	0-2.5%
Measuring channel	10
Current signal	4-20mA
Upper and lower control	Self-edit by end user
Measuring time	0-60s
Sampling frequency	125 ms / time
Measuring distance	250mm±100mm
Measuring thickness	0.1-0.3mm
Display	LED 7 digits display
Cable length between probe and display	5m
I/O interface of probe	7 pin aviation socket, 10 core aviation socket
I/O interface of display device	3-core cable, 25 holes D-type socket, 4-core cable, 3-core cable(with 7-core aerial socket)
Power	220V/50HZ, 100W
Operation humidity	≤90%
Operation temperature	0-50°C
Light interference	Not affected by external ambient light changes, no hood required for the probe
Temperature effect	With temperature automatic compensation is basically not affected by external temperature changes
Gross weight	17.5kg
Packing size	440*340*510mm

## The measured object in a dryer

- Choose a place which the measured object piled most, open a hole in the wall, and replaced with transparent glass, make a bouquet of light into the dryer, see the pictures.

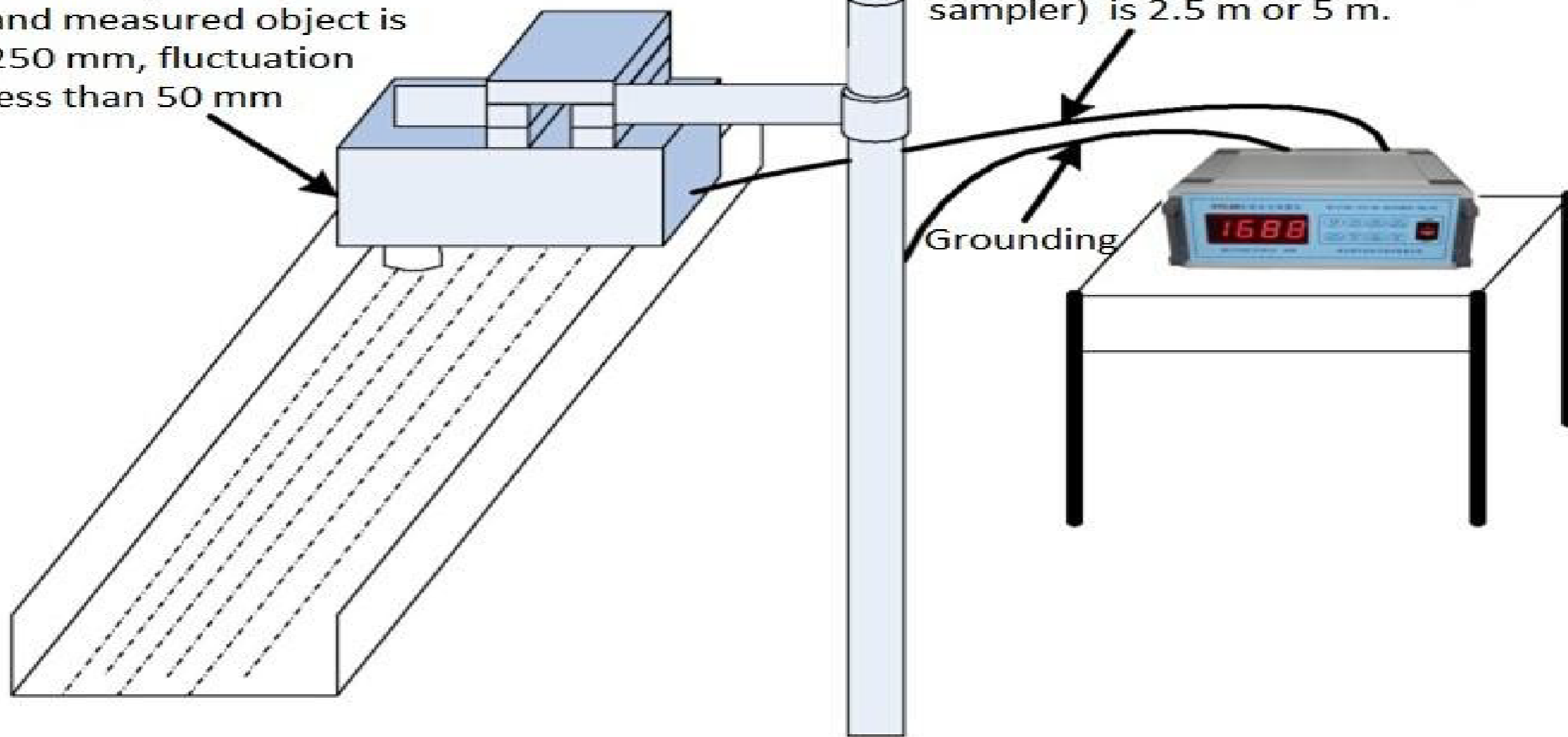


## The measured object in a Conveyor

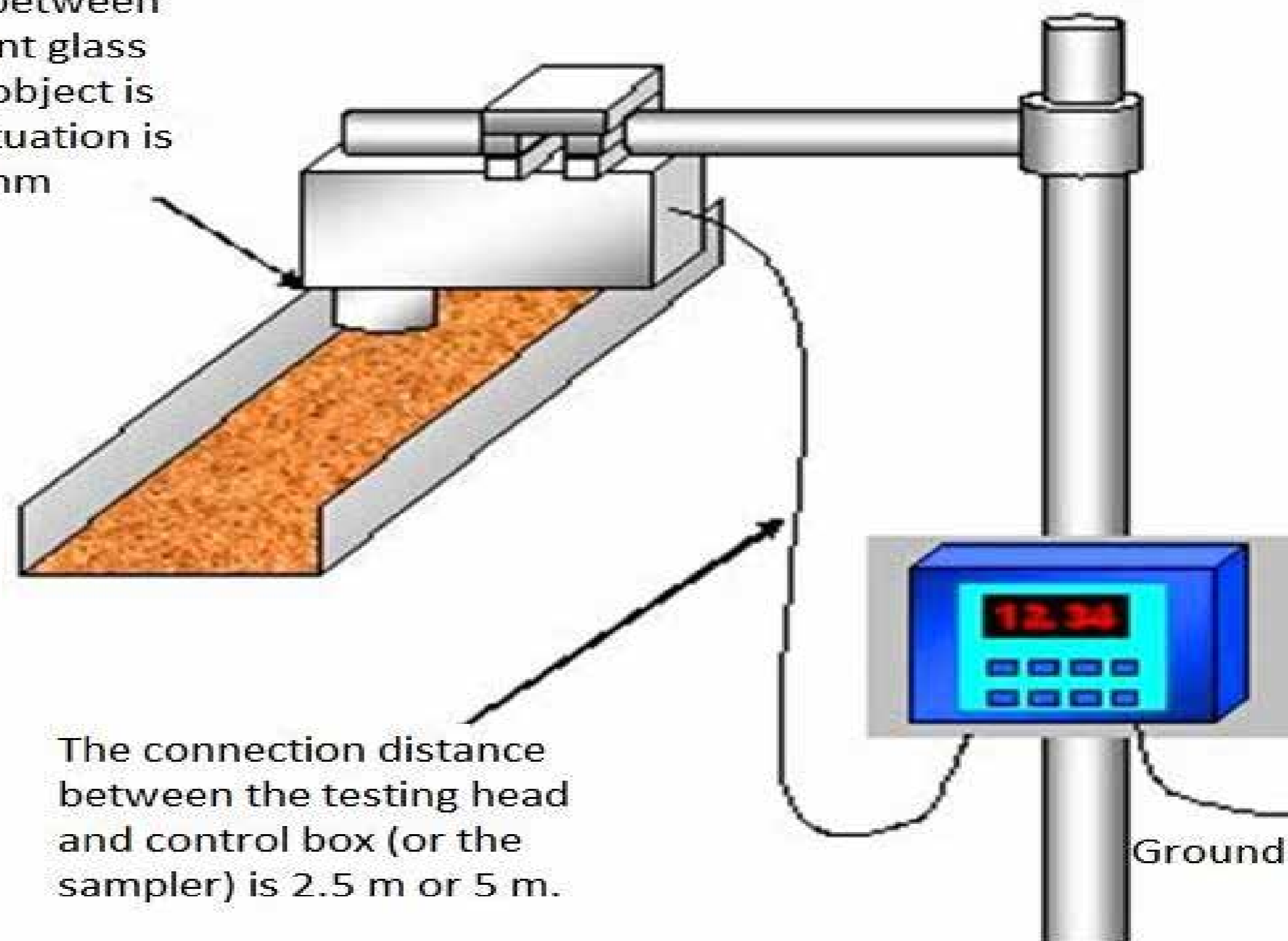


The distance between the transparent glass and measured object is 250 mm, fluctuation less than 50 mm

The connection distance between the testing head and control box (or the sampler) is 2.5 m or 5 m.



The distance between the transparent glass to measured object is 250 mm, fluctuation is less than 50 mm



# OUR CLIENTS









# THANK YOU

## UNIT 1

4 & 5, Marudhar Industrial Estate, Gas Godown Lane, Goddev Fatak Road, Bhayander (E), Dist. Thane - 401105. (India)

**Contact Us**  
+91-22 48255071, 48255072

## UNIT 2

Plot No. B-47, Addl. Midc Anandnagar, Ambernath (E), Dist. Thane (India)- 421506

**Contact Us**  
+91(0251)262054/43/44 /45/46

## KRDC

Plot No K2, Industrial Gala F4A, D- Wing, MGN Properties, Opposite Godrej Co., Addl MIDC Anand Nagar, Ambernath (E)- 421506 (India)

**Contact Us**  
+91-2512620543/44

## UNIT 4 (EUROPE)

Kerone Engineering Solutions LTD. (EMitech) Viale della Palma, 7, 70033 Corato BA, Italy (Europe)

## UNIT 5 (THAILAND)

Thailand Representative: 163 Rajapark Building, 18th floor, Sukhumvit 21 Road (Asoke), Wattana, Bangkok - 10110, Thailand

**Contact Person**  
G.Vivekanand  
+6689 500 9821

## Uzbekistan / Kazakhstan (Office)

TIT Company LLC: 100060, 2, A. Kahhar, Tashkent, Uzbekistan

**Contact Person**  
Mr. Slava  
+998 903540963

## Israel (Office)

Ornatus Industrial Tech Ltd: Dam Hamac bim 36, 7178602 Modiin, Israel

**Contact Person**  
Omri Fabian  
+972 584844887

## Australia & New Zealand (Office)

Linetech Pty Ltd: Po Box 3046, Browns Plains, Qld 4118. Australia

**Contact Person**  
Eric Quevauvilliers  
+61 (0)418 871 005

## Bangladesh (Office)

House-10, Road-5 Priyanka City, Sector-12, Uttara, Dhaka-1230, Bangladesh

**Contact Person**  
Md. Emtiaz Morshed  
+8801747762200



SCAN HERE

## Our Mails

info@kerone.com  
sales@kerone.com  
marketing@kerone.com

## Website

www.kerone.com  
www.kerone.net  
www.keroneindia.com