



# REVERSE ROLL COATING MACHINE

Environment Friendly Engineering Solution Company



In Association with SVCH-Technologii, Moscow (Russia)

ISO 9001:2015 | ISO 14001:2015 | EMS 14001 | OHSAS 18001:2007

[www.kerone.com](http://www.kerone.com)

# About Kerone

KERONE now renowned name in serving specialized need of customers with best quality and economical process Heating /cooling and drying products, manufactured in high quality environment by well trained and qualified workforce(special purpose machineries) .

KERONE is pioneer in application and implementation engineering with its vast experience and team of professionals. KERONE is devoted to serve the industry to optimize their operations both economically and environmentally with its specialized heating and drying solutions.

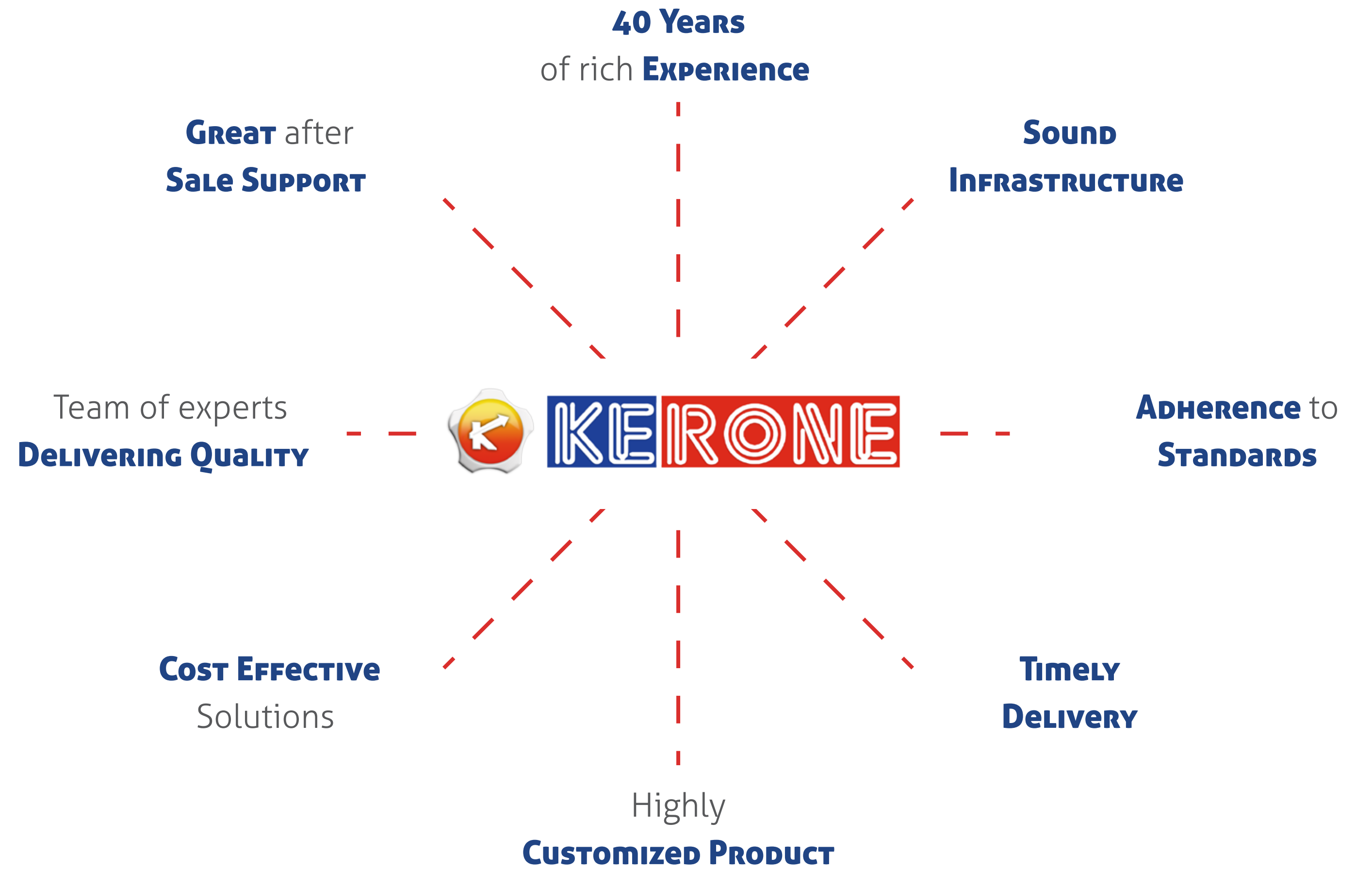
**“Enhance the value of customer operation through our customer need centric engineering solution”**

## *Mission*

- To enhance the value of customer operation through our customer need centric engineering solution.
- We are committed to provide our customers, unique and best in class products in Industrial heating, drying and cooling segment, with strategic tie-up for the technical know-how with renowned leader in the industry specific segment.

## *Vision*

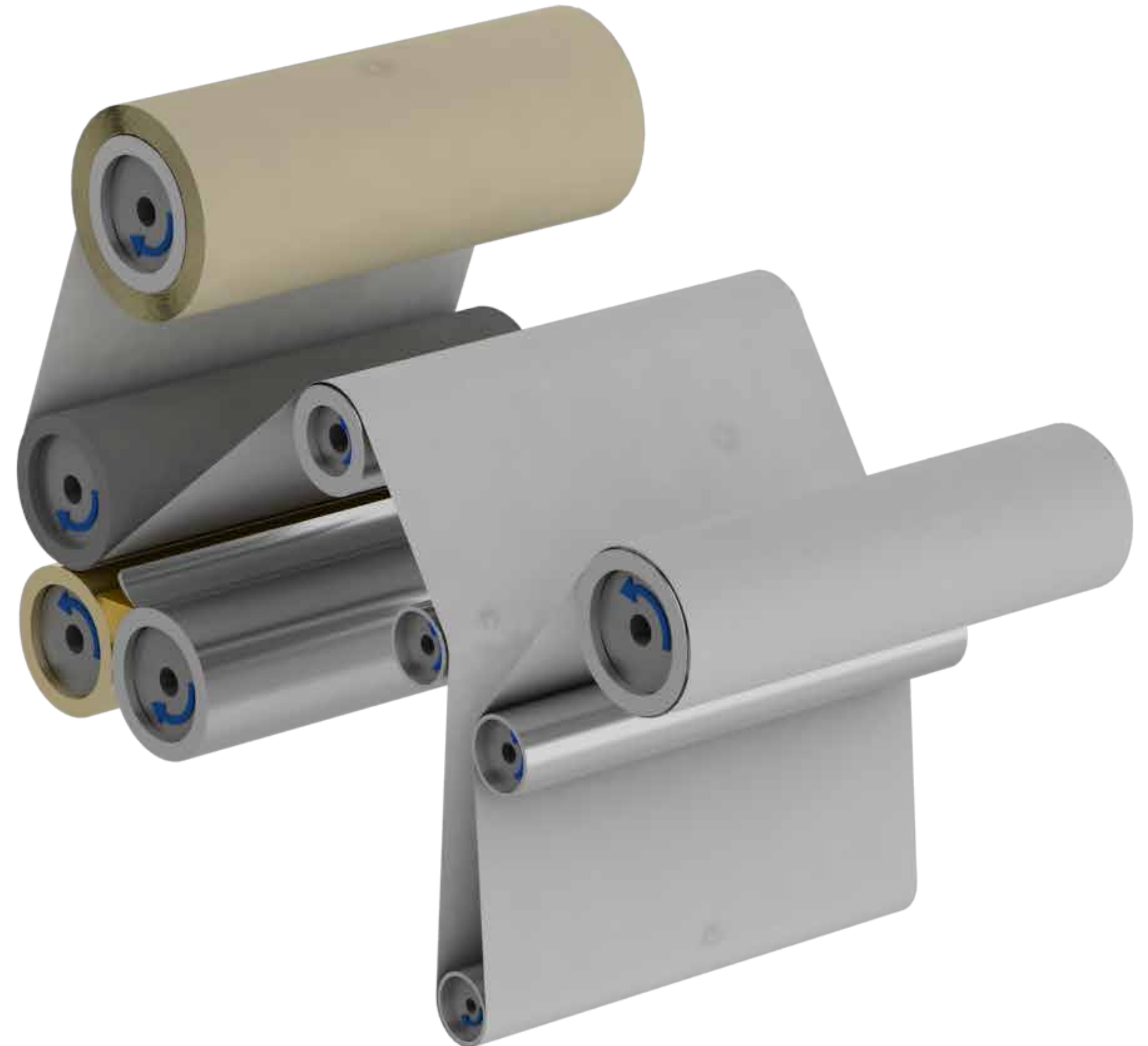
- Turn into world leader in providing specialized, top-notch quality and ecological industrial heating, cooling and drying solution across the globe.
- To attain global recognition as best of quality and environment friendly engineering solution company.



## Introduction to Reverse Roll Coating

Reverse roll coating is a roll-to-roll coating strategy for wet coatings. It is separated from other roll coating systems by having two reverse-running nips. The metering roll and the applicator roll turn in inverse directions with the rate contrast of 50% to 150%, with an exact crevice between them. The surface of the applicator roll is stacked with an overabundance of coating before the metering nip, so its surface rises up out of the metering nip with an exact thickness of coating equivalent to the crevice.

In reverse roll coating, the coating material is measured onto the applicator roller by exactness setting of the hole between the upper metering roller and the application roller underneath it. The coating is "wiped" off the application roller by the substrate as it goes around the bolster roller at the base. The chart delineates a 3-roll reverse roll coating process, despite the fact that 4-roll forms are normal.



# Trusted Partner



# Our Clients



**KERONE**

Kerone Engineering Solutions Limited

### UNIT I

B/10, Marudhar Industrial Estate, Goddev Fatak road, Bhayander(E), Mumbai-401105

#### EMAIL

info@kerone.com | sales@kerone.com  
marketing@kerone.com

### UNIT II

Plot No. B-47, Addl. MIDC Anandnagar, Ambernath (East), Dist. Thane- 421506

#### WEBSITE

www.kerone.com | www.kerone.net  
www.keroneindia.com

### UNIT III

Plot NO. W-104, Addl. MIDC Anandnagar, Ambernath East, Thane- 421506. (India)

#### Phone

+91-22-28150612/13/14  
+91-251-2620542/43/44/45/46